

The Chromebook built for schools  
and designed for learning

## THE HP Chromebook 11A G8 Education Edition

Help students reach their potential with cloud-first<sup>13</sup> learning on the durable HP Chromebook 11A G8 EE that keeps pace with active student lifestyles while the fast-booting Chrome OS makes IT management easy.





A Chromebook built to withstand students and school days

Give students a Chromebook that can survive a fall off a desk<sup>8</sup>, a splash from a soda<sup>8</sup> or a tugged power cord.

# BUILT FOR SCHOOL



## ENHANCED DURABILITY

- 120,000 hrs of rigorous testing<sup>8</sup>
- 122 cm drop on plywood<sup>8</sup>
- 76 cm drop on concrete<sup>8</sup>
- 200 tumble cycles<sup>8</sup>

## SPILL-<sup>8</sup> AND PICK-RESISTANT Keyboard

- HP improved anchored keyboard design
- Minor spill-resistant keyboard<sup>8</sup>

## REINFORCED USB-C™<sup>8</sup>

- Reinforced USB-C™ power port<sup>8</sup> withstands daily stress and strain over the lifetime of the product, minimizing service cost



## Classroom-ready performance

Quickly stream and access textbooks, tests, and more with AMD™ processors<sup>5</sup> and the Chrome OS™. Work continuously with long battery<sup>2</sup> life and fast recharging<sup>7</sup>.

# CLASSROOM-READY



### School-Day Performance

AMD™ A4 & A6 processors<sup>5</sup>  
Up to 8GB memory  
Up to 32GB storage<sup>9</sup>

### ALL DAY BATTERY

Long battery life up to 10 hours<sup>2</sup> with HP Fast Charge<sup>7</sup> - 90% in 90 minute<sup>7</sup>  
Long life battery

### HP CLASSROOM MANAGER<sup>4</sup>

Make it easier for teachers to manage student activities and collaborate effectively



# HP Chromebook 11A G8 EE

## PRODUCT WALKTHROUGH



Large rubber bumper on edges and corners to help absorb shock from 76cm drop on concrete<sup>8</sup> and 122cm drop on plywood<sup>8</sup>

Keyboard that can be repeatedly wiped down with common household cleaning wipes<sup>8</sup>

HP Fast Charge<sup>7</sup>  
Up to 90% within 90 mins<sup>7</sup>

Power for learning  
AMD™ A4 & A6 processors<sup>5</sup> with up to 8GB memory and 32GB storage<sup>9</sup>

180 Degree Hinge Design

Passed HP Education SVTP<sup>8</sup> and MIL-STD<sup>1</sup>





# HP Chromebook 11A G8 EE

## PRODUCT WALKTHROUGH



Slim design  
Z-Height:  
18.85 mm



Enhanced USB-C™ ports<sup>8</sup> stand against larger pulling force with additional bracket to hold on to it

Stay connected  
Qualcomm® 2x2 AC<sup>6</sup> WLAN,  
MU-MIMO<sup>15</sup> supported  
HP Extended Range Wireless LAN<sup>14</sup> supported



Spill- and Pick-resistant keyboard<sup>8</sup>  
Resistant up to 350ml<sup>8</sup>  
HP Improved Anchored Key Design

Battery life beyond school day<sup>2</sup>  
Up to 10 hrs battery life<sup>2</sup>



# HP CHROMEBOOK 11A G8 EE

## ADDITIONAL TESTING

**Wipeable keyboard**  
Tested to 1,000 wipes  
with a disinfectant cloth<sup>8</sup>



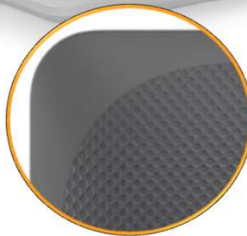
**Textured Surface**  
Easy to grip and  
resists scratches



**Anchored Keys**  
Anchored skirt design  
helps resist picking



**Co-molded rubber  
trim around edges**  
Absorbs shock from  
accidental drops and  
bumps



**Reinforced Hinge**  
For flexibility and  
damage protection



**Drop Test<sup>8</sup>**  
Tested to 76cm (30")  
onto concrete or steel<sup>8</sup>  
and 122cm (48") onto  
plywood<sup>8</sup> to mimic a  
drop from desk height



**Tumble Tests<sup>8</sup>**  
200 tumble cycles<sup>8</sup>



**Spill Tests<sup>8</sup>**  
Survives minor  
spills up to 350ml  
of water  
(almost 12 oz.)<sup>8</sup>



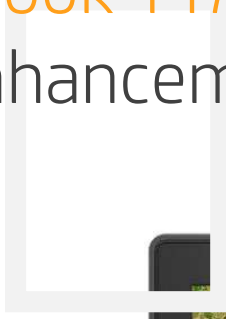
Photos are for illustrative purposes only and do not depict actual testing  
© Copyright 2019 HP Development Company, L.P. The information contained herein is subject to change without notice.





# HP Chromebook 11A G8 EE

## Durability Enhancement



Additional bezel brackets to support the pressure and prevent bending<sup>8</sup> while in a backpack



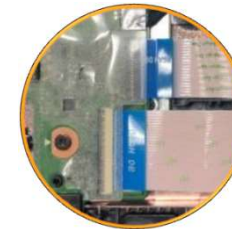
Added bracket on the panel cable connector to ensure it doesn't come loose<sup>8</sup>



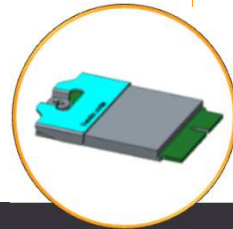
Reinforced USB-C™ ports<sup>8</sup> stand against larger pulling force with additional stronger SUS bracket to hold on to it



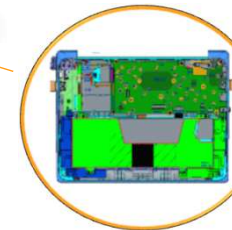
Corners reinforced with sheet metal to support higher drop<sup>8</sup>



Adding tape for all the connectors to ensure the connectors don't come loose<sup>8</sup>



Added bracket on WLAN<sup>6</sup> card to ensure they don't come loose<sup>8</sup>



Additional battery plate to prevent it from being pierced<sup>8</sup>



## BUILT FOR SCHOOLS, DESIGNED FOR LEARNING

*Help students  
reach their  
potential on the  
durable HP  
machine that  
keeps pace with  
active student  
lifestyles*

# WHAT'S NEW?

### Enhanced durable design for daily activities

- Larger rubber bumper on edges and corners, Increased drop height to 76cm drop on concrete<sup>8</sup> and 122cm drop on plywood<sup>8</sup>, and enhanced USB-C™ connectors to stand against daily uses of plug and unplug.

### HP Improved Anchored Key Design

- HP Improved Anchored Key Design keyboard to make it harder to pick the keys up.

### Qualcomm® 2x2 AC<sup>6</sup> WLAN with MU-MIMO<sup>15</sup> & Extended Range Wireless Lan<sup>14</sup>

- Easy connection in dense classroom environment and provides a longer connection range and stable data-throughput at shorter ranges

### Easy to Clean

- Keyboard that can be repeatedly wiped down with common household cleaning wipes.

### Unique textured surface

- Easy for small hands to grip and handle with Unique textured surface

